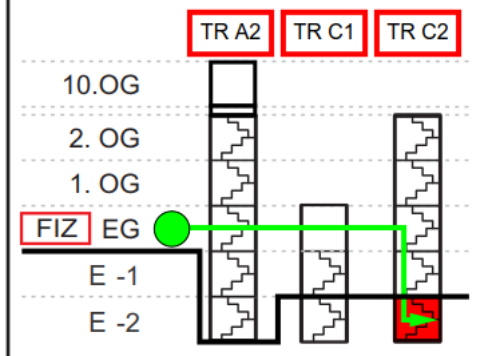


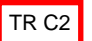










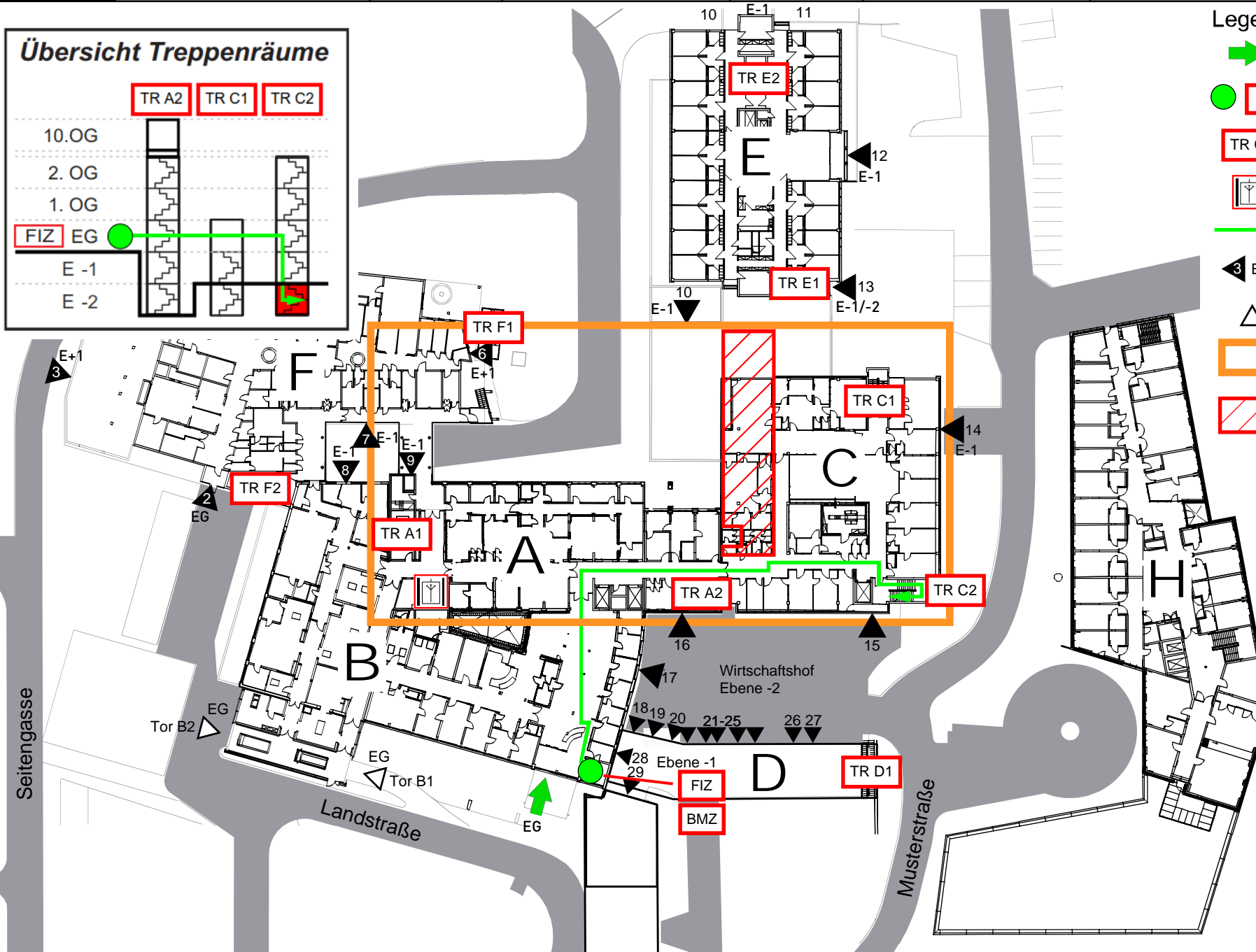
Meldergruppe	Gebäude	Geschoss	Raum	Melderanzahl	Melderart	Bemerkungen
13	Bauteil C	Keller Ebene -2	C-2.073 Lüftungszentrale	8	Rauchmelder	Warnung: Chemikalienlager neben Meldebereich

Übersicht Treppenträume



Legende:

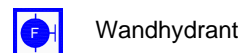
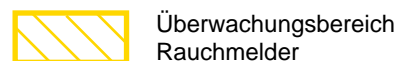
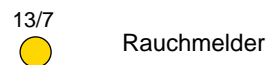
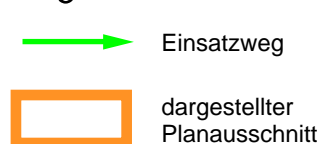
-  Objektzugang
-  Standort
-  FIZ
-  TR C2
-  Treppenraum
-  Feuerwehraufzug
-  Einsatzweg
-  Zugangstür mit
Zugangsebene
-  Tor
-  Planausschnitt
Rückseite
-  Meldebereich



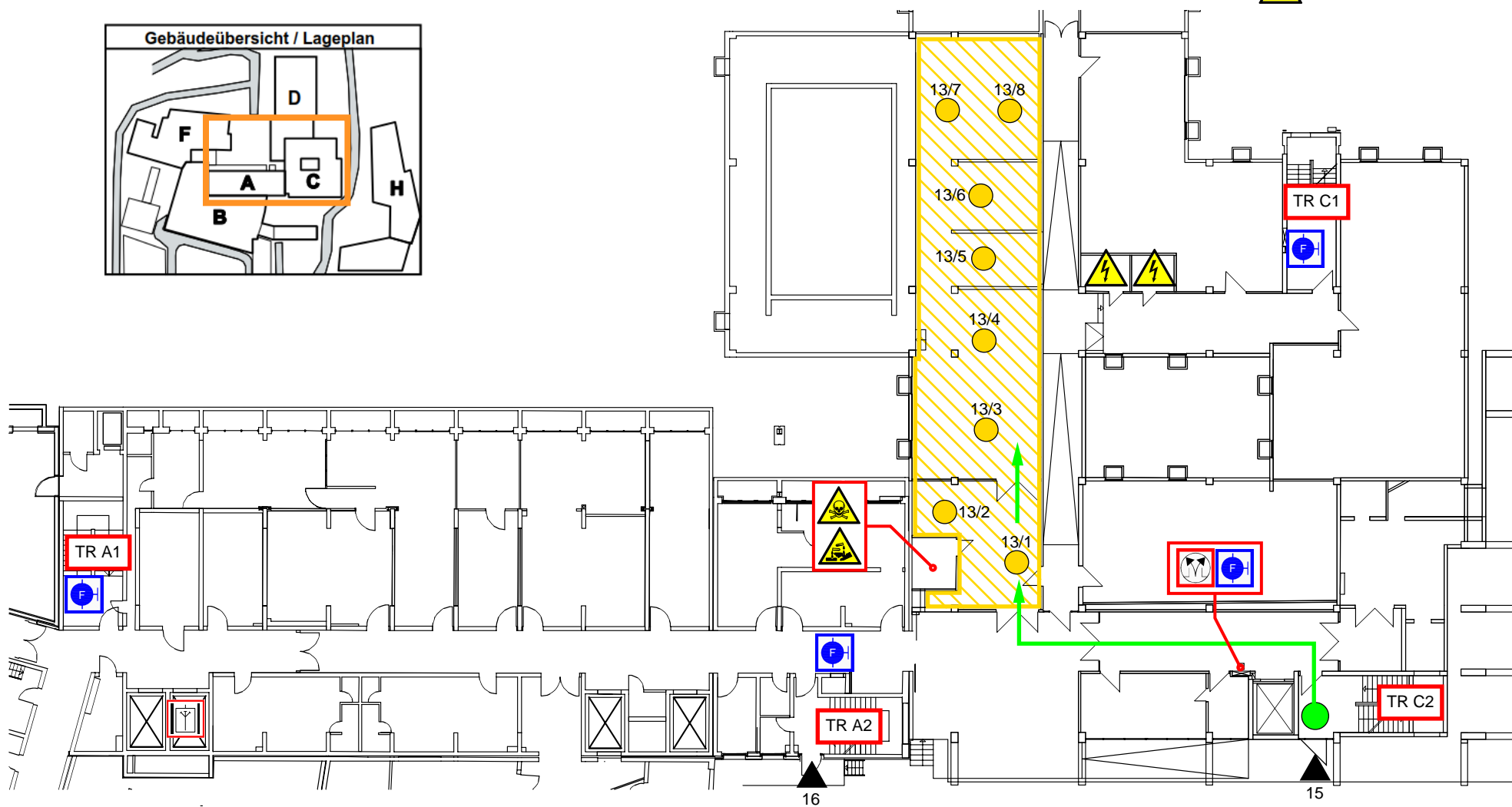
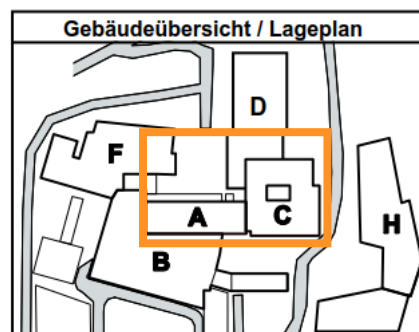
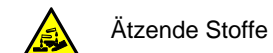
Objekt-Nr: **04.1.369**
Musterhaus
 Landstraße 123
 64123 Musterstadt
 Stand: 04.02.2021

Meldergruppe 13	Gebäude Bauteil C	Geschoss Keller Ebene -2	Raum C-2.073 Lüftungszentrale	Melderanzahl 8	Melderart Rauchmelder	Bemerkungen Warnung: Chemikalienlager neben Meldebereich
---------------------------	----------------------	--------------------------------	-------------------------------------	-------------------	--------------------------	--

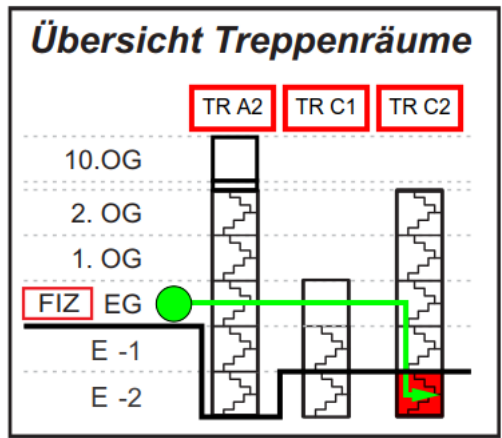
Legende:



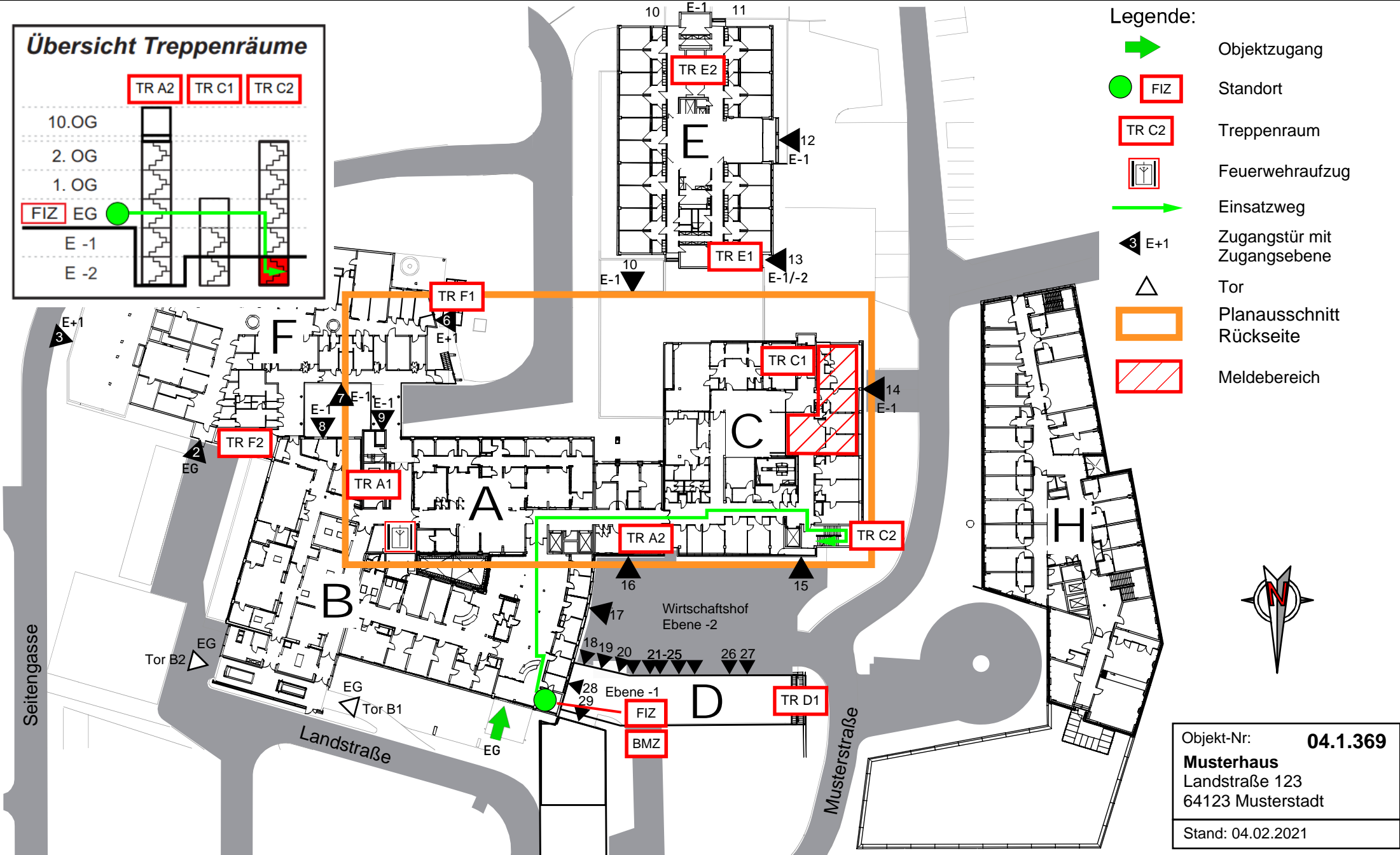
Warnungen:



Meldergruppe	Gebäude	Geschoss	Raum	Melderanzahl	Melderart	Bemerkungen
15	Bauteil C	Keller Ebene -2	C-2.077 Technikraum	1	RAS Rauchansaugsystem	-----





- Legende:**
- Objektzugang
 - Standort
 - Treppenraum
 - Feuerwehraufzug
 - Einsatzweg
 - Zugangstür mit Zugangsebene
 - Tor
 - Planausschnitt Rückseite
 - Meldebereich







Objekt-Nr: **04.1.369**
Musterhaus
Landstraße 123
64123 Musterstadt
Stand: 04.02.2021

Meldergruppe	Gebäude	Geschoss	Raum	Melderanzahl	Melderart	Bemerkungen
15	Bauteil C	Keller Ebene -2	C-2.077 Technikraum	1	RAS Rauchansaugsystem	-----



Legende:

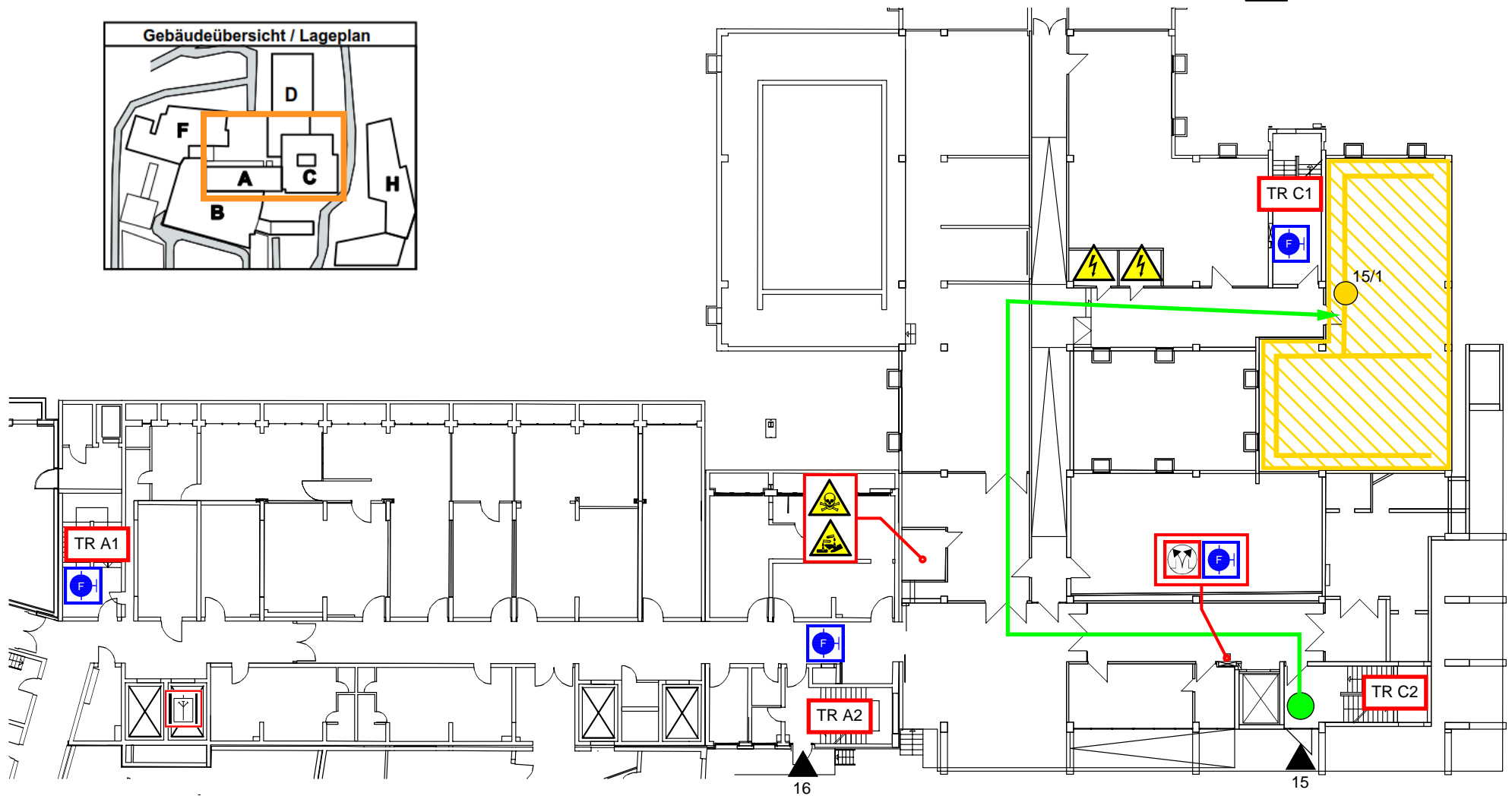
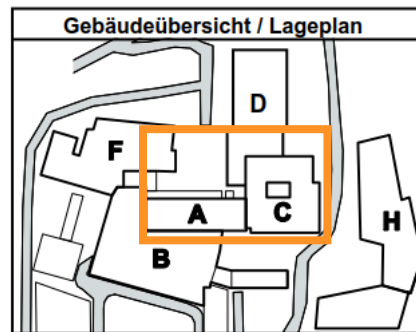
 Einsatzweg
 dargestellter
Planausschnitt

15/1
 RAS-Auswerteeinheit
 Überwachungsbereich
RAS

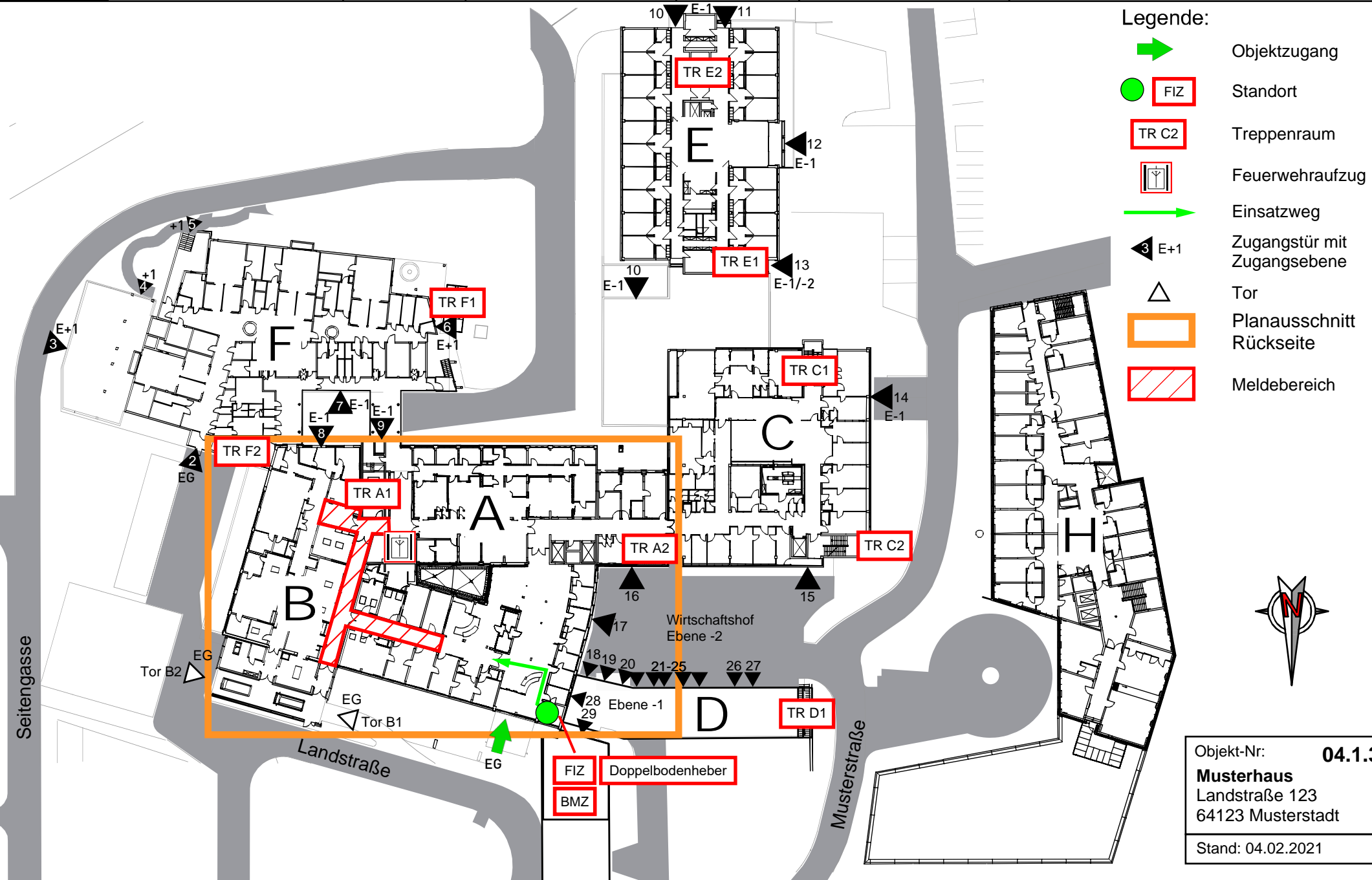
 Bedienstelle Entrauchung
 Wandhydrant

Warnungen:

 Giftige Stoffe
 Ätzende Stoffe
 Elektrische Gefahr



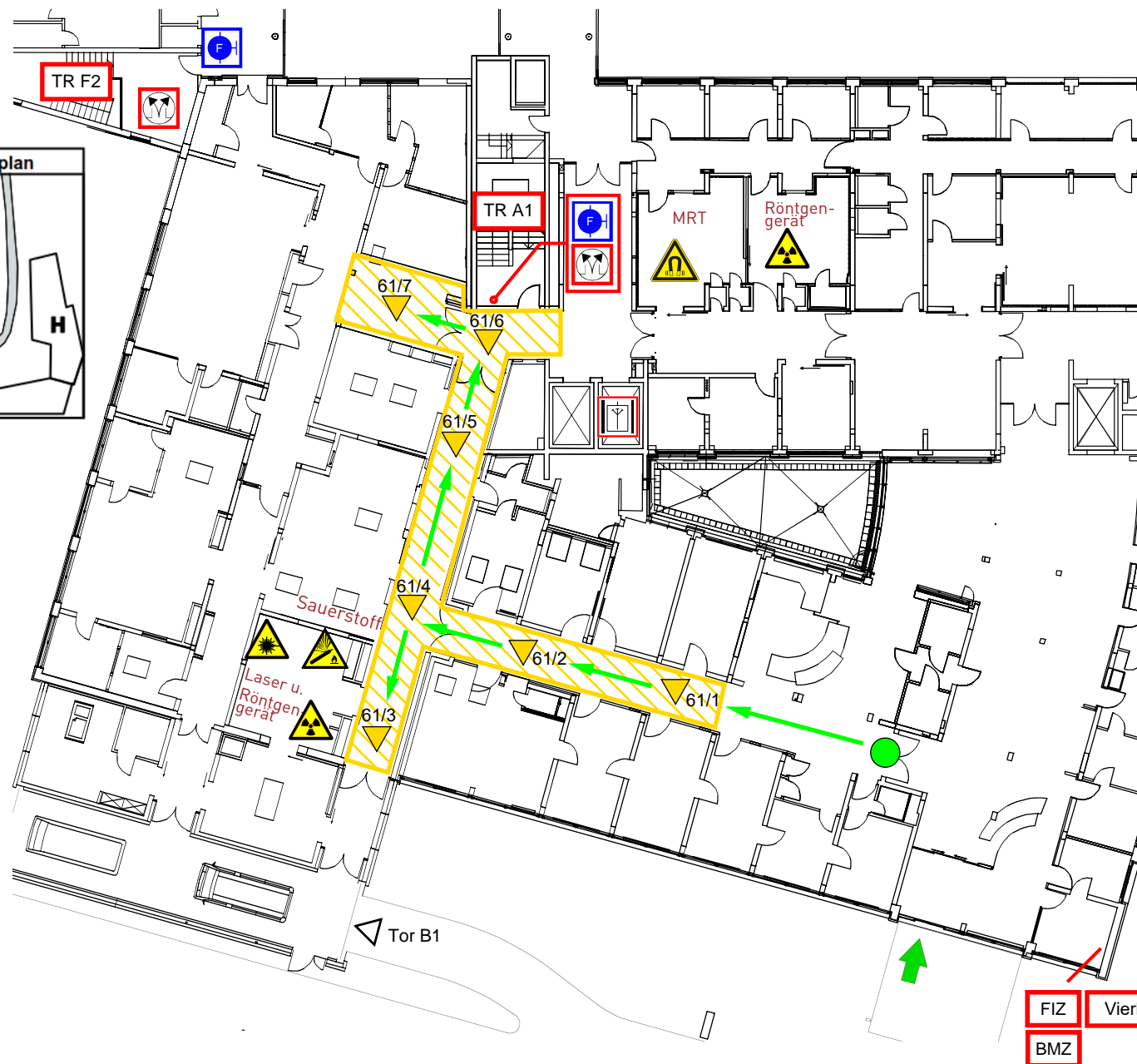
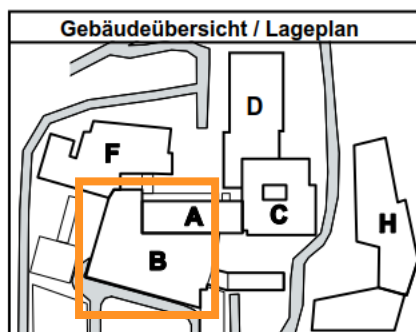
Meldergruppe	Gebäude	Geschoss	Raum	Melderanzahl	Melderart	Bemerkungen
61	Bauteil C	EG	Flur B0.011	7	Rauchmelder im Doppelboden	Doppelbodenheber aus dem FIZ mitnehmen



Meldergruppe	Gebäude	Geschoss	Raum	Melderanzahl	Melderart	Bemerkungen
61	Bauteil C	EG	Flur B0.011	7	Rauchmelder im Doppelboden	Doppelbodenheber aus dem FIZ mitnehmen

Legende:

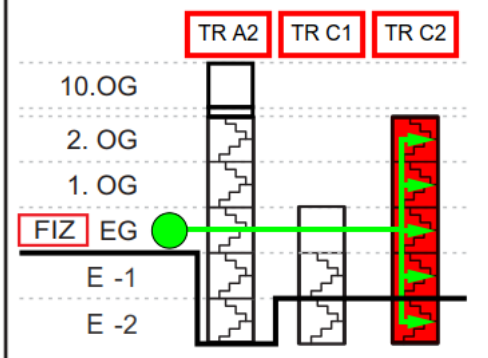
-  Einsatzweg
-  dargestellter Planausschnitt
-  61/1 verdeckter Rauchmelder im Doppelboden
-  Überwachungsbereich Rauchmelder
-  Bedienstelle Entrauchung
-  Wandhydrant
- Warnungen:
 -  Laser
 -  Gasflasche
 -  Röntgenstrahlung
 -  magnetisches Feld





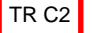






100

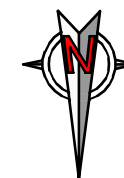
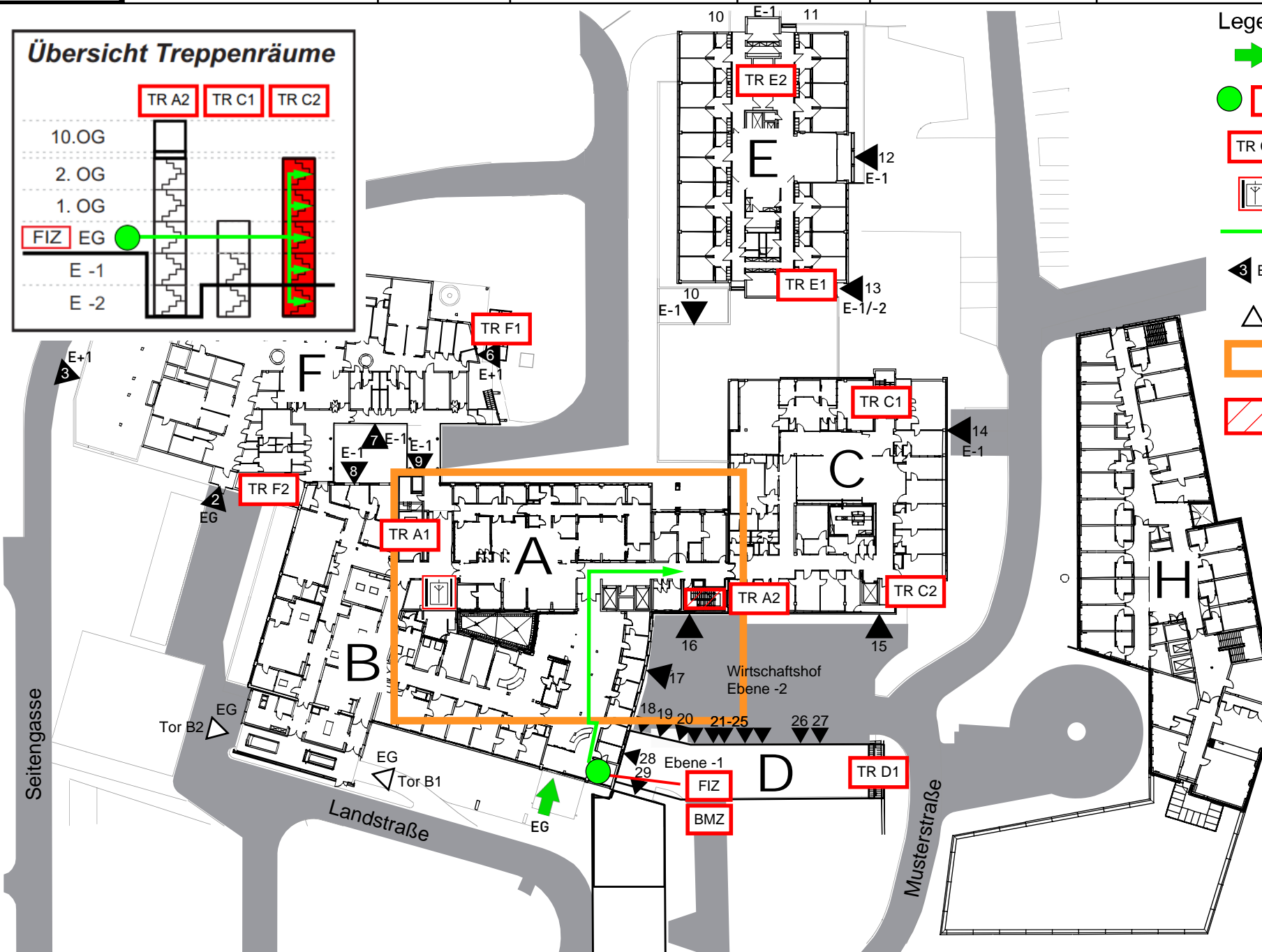
Meldergruppe	Gebäude	Geschoss	Raum	Melderanzahl	Melderart	Bemerkungen
100	Bauteil A	E -2 bis 2. OG	Treppenraum TR A2	5	Handfeuermelder	-----

Übersicht Treppenträume



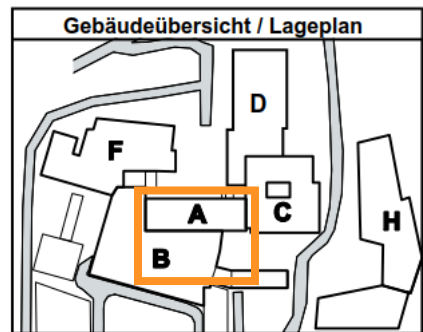
Legende:

-  Objektzugang
-  Standort
-  Treppenraum
-  Feuerwehraufzug
-  Einsatzweg
-  Zugangstür mit Zugangsebene
-  Tor
-  Planausschnitt Rückseite
-  Meldebereich

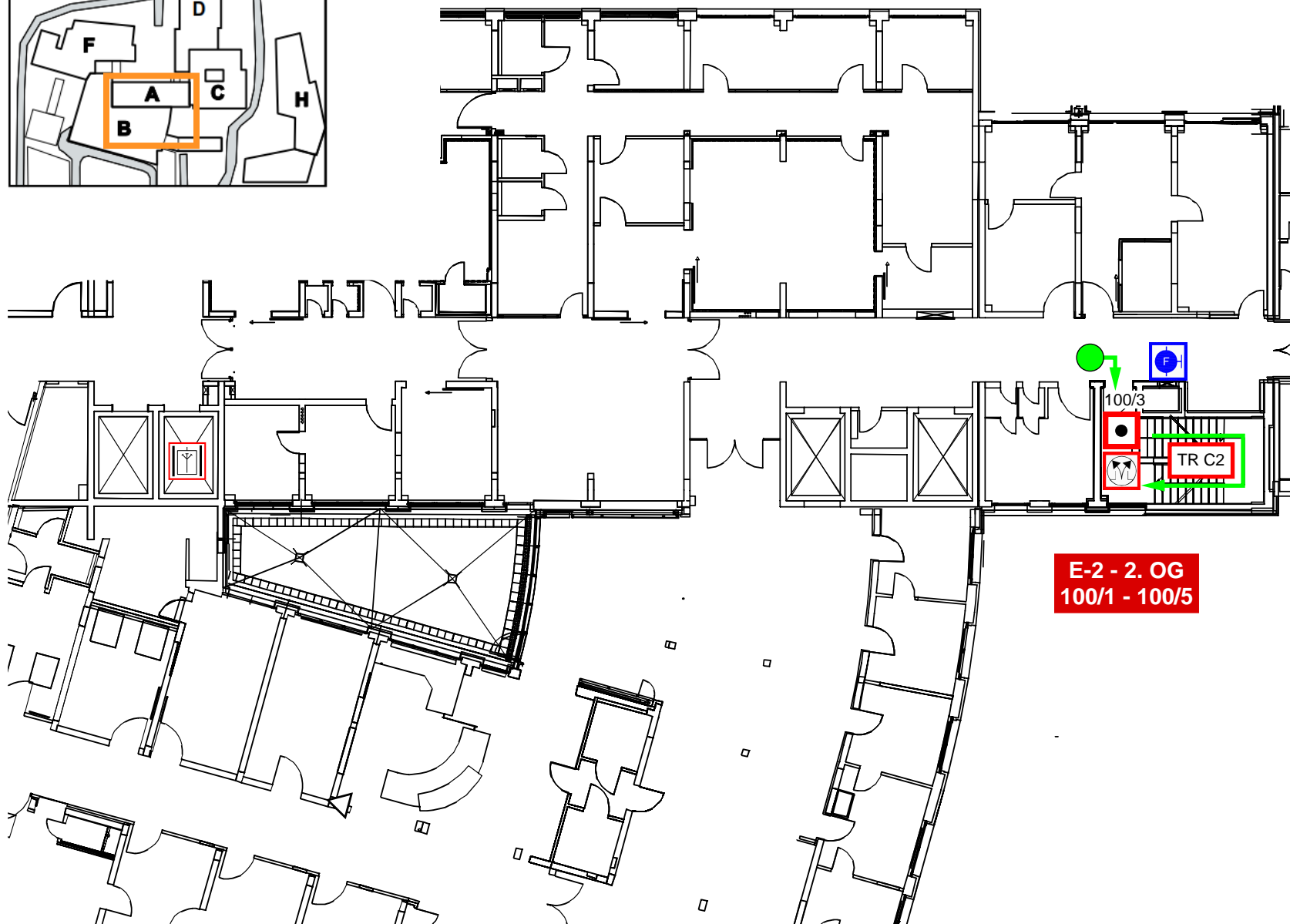


Objekt-Nr: **04.1.369**
Musterhaus
 Landstraße 123
 64123 Musterstadt
 Stand: 04.02.2021

Meldergruppe 100	Gebäude Bauteil A	Geschoss KG -2 bis 2. OG	Raum Treppenraum TR A2	Melderanzahl 5	Melderart Handfeuermelder	Bemerkungen -----
----------------------------	----------------------	--------------------------------	------------------------------	-------------------	------------------------------	----------------------



Erdgeschoss



Legende:

-  Einsatzweg
-  dargestellter Planausschnitt
-  100/3 Handfeuermelder
-  Bedienstelle Entrauchung
-  Wandhydrant